

**David Barthelmy**

**From:** news@aamineralspecimens.com  
**Sent:** Monday, July 13, 2009 9:44 PM  
**To:** dbarthelmy@webmineral.com  
**Subject:** 13th July 2009 Newsletter



**AA MINERAL SPECIMENS**

**61 2 9980 9815**

ABN 83 320 547 821

13 July 2009

In This Issue

[Broken Hill Lode,  
NSW](#)

[New Products](#)

[Our Itinerary](#)

[Quick Links](#)

[Home Page](#)

[New Stock](#)

[About Us](#)

[Previous Newsletters](#)

Join Our Mailing List

[Join Our Mailing List](#)

Dear Dave Barthelmy

In this issue, we continue with our emphasis on secondary minerals mainly from the Monut Bonnie Mine and Rum Jungle Deposits Australia's Northern Territory.

With their vivid colours and exotic habits, these carbonates, phosphates and arsenates provide a focus of interest and beauty in any collection.

Don't forget to check out our [useful links](#) to a number of online Sciences information resources.

Happy collecting

Susan and Bruce

NB: If you are having trouble displaying the images in this newsletter, you may click the 'display content' link at the top of your page. Also, adding our email address to your address book will in many cases solve the problem. You can also view this newsletter by going to our newsletter page, clicking on the + sign, and selecting the newsletter you wish to view.

## THE BROKEN HILL LODE, NEW SOUTH WALES, AUSTRALIA

The Broken Hill Deposit is located in the state of New South Wales, Australia about 1100 km a little north of due west of the state capital, Sydney.

The lode consists mainly of the metal sulphides sphalerite and galena with minor sulphides: pyrrhotite, marcasite, chalcopyrite, arsenopyrite and lollingite with a host of rare and trace minerals.

The gangue is equally varied with garnet, rhodonite, bustamite, hedenbergite, calcite, quartz, orthoclase, fluorite, apatite and again a host of rarer mineral species.

A characteristic of the lode is the large size of the crystals helping to make the locality one

most sought after by collectors.

The deposit is elongate and has a strike of approximately SW- NE. In longitudinal section it is boomerang shaped with the deepest sections to the SW and NE. Dip is variable and complex but overall is subvertical.

The ore body is considered to be about 1800 million years old and during that considerable span of time has been sheared, faulted and subjected to several stages of metamorphism and metasomatism. This helps to explain the mineralogical complexity of the lode.

The ore body is zoned with lead and zinc dominated lenses.

The ore body is hosted by gneisses of the Willyama Supergroup comprising original lithologies being feldspar rich sandstones and siltstones.

A peculiarity of the deposit is its isolation. The ore body is one of the largest known but despite there being many other similar deposits in the area they are all much smaller by orders of magnitude.

Probably the most popular reference for collectors on this deposit is "Minerals of Broken Hill" by Worner, H.K and Mitchell, R.W. (Ed). Rare but occasionally appears on Amazon.

We have a number of Broken Hill specimens – just type 'Broken Hill' in the search box on the lefthand side of our home page to see a listing.

## New Stock



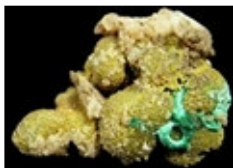
### **Malachite, Cerussite**

Malachite, pyromorphite, Rum Jungle, NT, Australia.



### **Malachite, Cerussite**

Malachite, cerussite, Rum Jungle, NT, Australia.



### **Pyromorphite, Cerussite, Malachite**

Pyromorphite, cerussite and malachite, Rum Jungle, NT, Australia.



### **Diopside, chalcopyrite, pyrite**

Diopside, chalcopyrite, pyrite, Mt Elliot Mine, Qld, Australia.

### **Duftite**

Duftite, Mt Bonnie Mine, NT, Australia.



**Malachite & Cobaltian Calcite**

Malachite on Cobaltian Calcite, Masonoi Mine, Shaba, Congo.



**Fluorite**

Fluorite, Taiping Mine, Hunan, China.



**Pyromorphite**

Pyromorphite, Resuperferolitica Mine, Cerro Canaleja, Andalusia, Spain.

**Itinerary**

**September**

**Sunday 20th September 2009**

Bushland Shire Festival  
(Hornsby Council)  
Fagan Park, Arcadia Road  
Galston (Sydney NSW)

**October**

**Saturday 3rd to Monday 5th October 2009**

Gemkhana  
Recreation Area  
Braidwood Rd, Goulburn NSW

[Unsubscribe](#) from AA Mineral Specimens Newsletter

Copyright 2009 AA Mineral Specimens [www.aamineralspecimens.com](http://www.aamineralspecimens.com)